

# **York VCSE Assembly – Health and Care**

Wednesday 12 November 2025



York CVS is a Registered Charity (no. 225087) Company Limited by Guarantee, Registered in England (no. 493550)





# Healthwatch update

09 September 2025

**healthwatch**  
York

## What happened

Informed on Friday 27 June at 5pm about plans to abolish HWE and LHW.

10-year plan published – confirmed

2nd Dash review published

## What we still don't know

- Timetable for change – best guess 31 March 2027 but...
- What HW functions moving into LA and ICBs looks like.
- What funding will still be available to LA and ICBs to commission these functions if they choose to.
- If TUPE applies (suspect not but unclear)
- What happens if a local Healthwatch becomes unsustainable in the period before we are abolished

## What we've done so far

Published our statement on the future of Local Healthwatch:

[Healthwatch York - Time to strengthen, not silence, people's voices in health and care](#)

Alongside 130 other LHW, signed a joint letter to Wes Streeting

[Healthwatch York - 131 Local Healthwatch Services Unite to Fight for Independent Public Voice](#)

Worked with colleagues from the network to set up a petition

## The petition

Plans announced to abolish Healthwatch England and the Healthwatch network.

Our functions will be absorbed into local authorities and ICBs or replaced by the NHS app.

If you share our concerns about independent voice in health and care, please sign the petition here:

<https://petition.parliament.uk/petitions/732993>

## Political support for Healthwatch

- <https://edm.parliament.uk/early-day-motion/64249>
- EDM 1846: Local Healthwatch – started by Siân Berry, Green Party. 10 signatories in total, 4 Green, 2 Labour, 3 Independent, 1 Democratic Unionist Party
- <https://edm.parliament.uk/early-day-motion/64288>
- EDM 1890: Independence of Healthwatch England – started by Jess Fuller, Lib Dems. 34 signatories in total, 29 Lib Dems, 1 Labour, 1 Independent, 2 Green, 1 Democratic Unionist Party

## The local picture

York CVS are supporting the Healthwatch York team to develop plans to continue beyond 31 March 2027.

Vocal support at the Health and Wellbeing Board meeting from the Chair.

Meeting held 16 October with Sara Storey and Michael Ash-McMahon to discuss local commissioning post-abolition.



## Other interesting things

NHS England are being abolished, but in the meantime...

Louise Ansari has been appointed as a non-executive director of NHS England from 1 September 2025. All appointments run until 31 July 2027 or until NHS England is disestablished.

## Other interesting things

NHS England are tendering for two contracts:

Future of Patient Feedback : A Roadmap For Measurement, Insight and Improvement - Find a Tender (published 30 July)

Procurement of The Voluntary, Community, and Social Enterprise Partner - Find a Tender (published 18 July)

# Questions?



## For more information

Healthwatch York at York CVS

Priory Street Centre

15 Priory Street, York, YO1 6ET

[www.healthwatchyork.co.uk](http://www.healthwatchyork.co.uk)

tel: 01904 621133

email: [healthwatch@yorkcvs.org.uk](mailto:healthwatch@yorkcvs.org.uk)



[@healthwatchyork.social.bsky](https://social.bsky.app/profile/healthwatchyork)



[Facebook.com/HealthwatchYork](https://www.facebook.com/HealthwatchYork)

**healthwatch**

# Family First Reforms

City of York Council



York CVS is a Registered Charity (no. 225087) Company Limited by Guarantee, Registered in England (no. 493550)

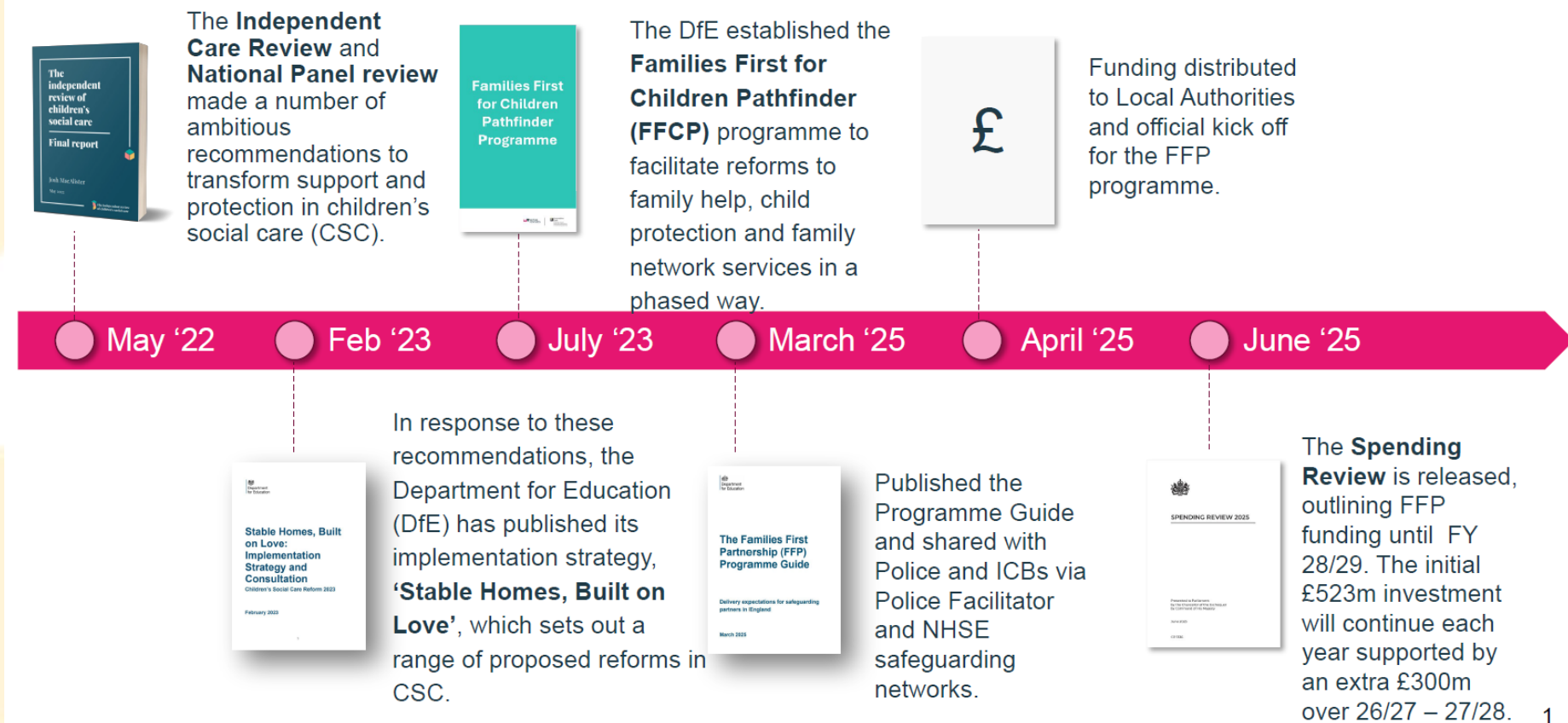


# FAMILIES FIRST BRIEFING

Niall McVicar – Head of Innovation & Children's  
Champion

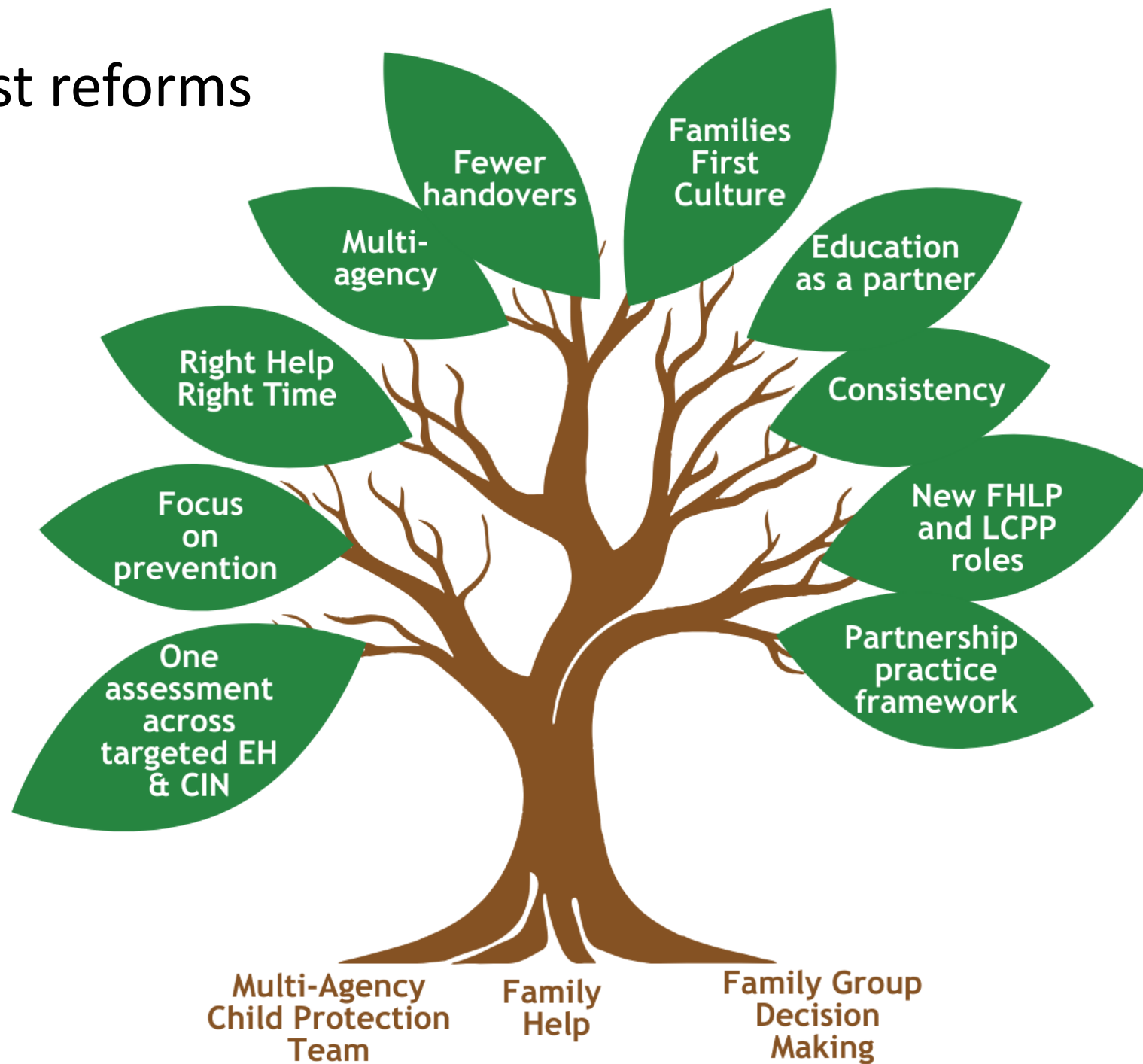
Alan Hodgson - Outcomes & Quality Manager

# The case for reform



Children  
Wellbeing and  
Schools Bill

# Families First reforms



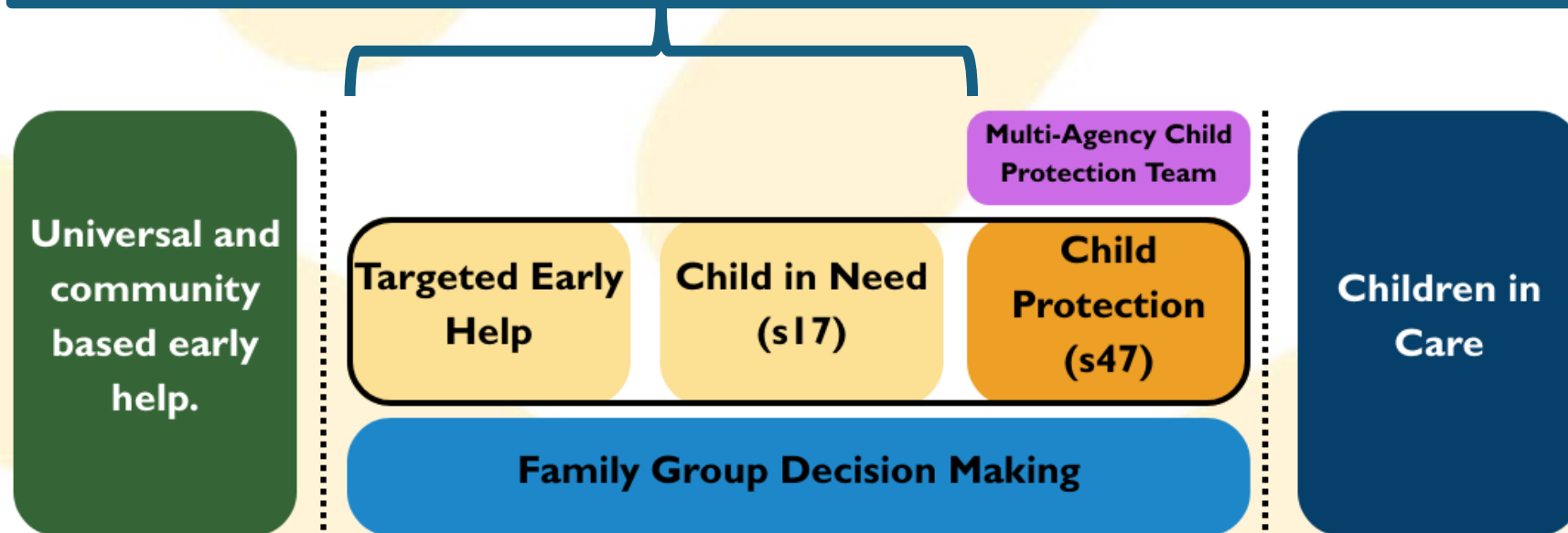


# Family Help

Early identification of support, seamless support, removing transitions wherever possible to allow for meaningful and impactful relationships.

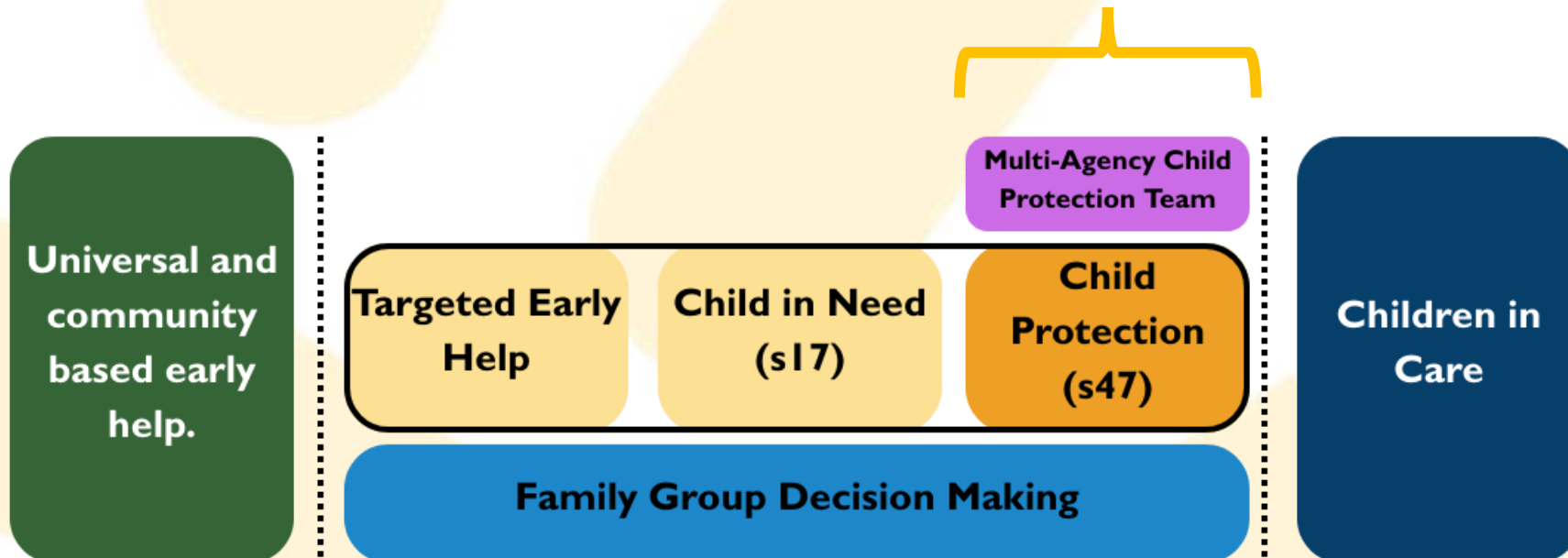
The **Family Help Lead Practitioner Role** builds strong and trusted relationship with the family and remain their main point of contact for as long as they need support.

**Single Family Help assessments and plans** - remove duplication to ensure that families only tell their story once, even as needs change.

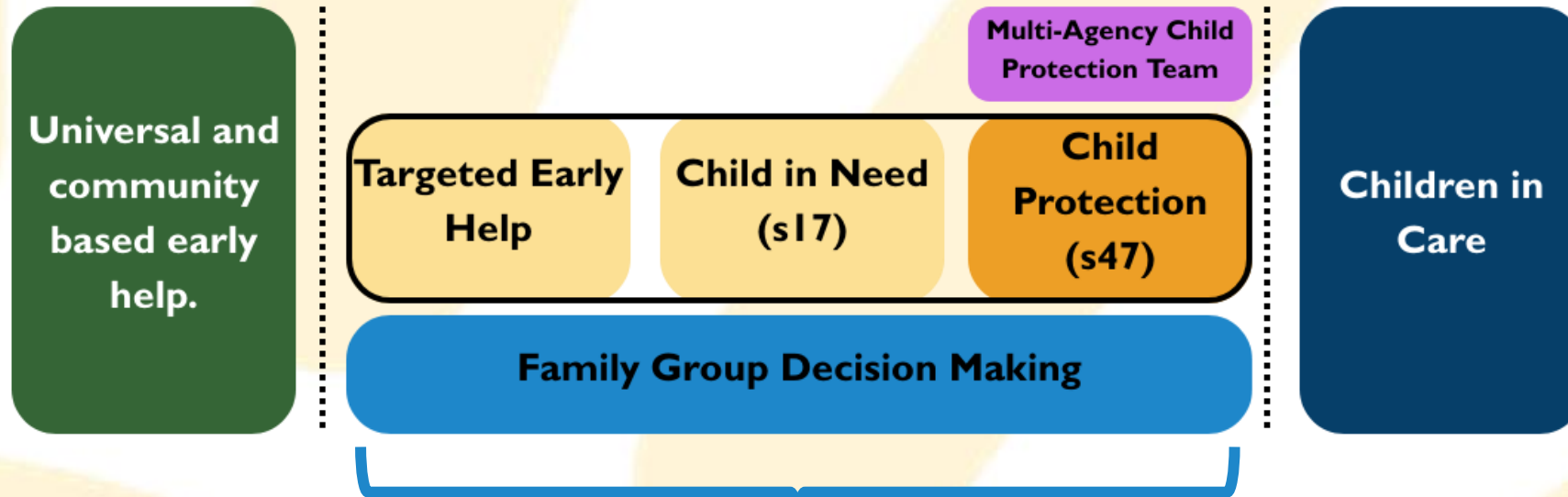


# Multi-Agency Child Protection Team

Multi-agency teams help ensure the right help at the right time  
Enhancing information sharing and intervention for families. Development of the  
Lead Child Protection Practitioner (not case holding) who is responsible for child  
protection activity.



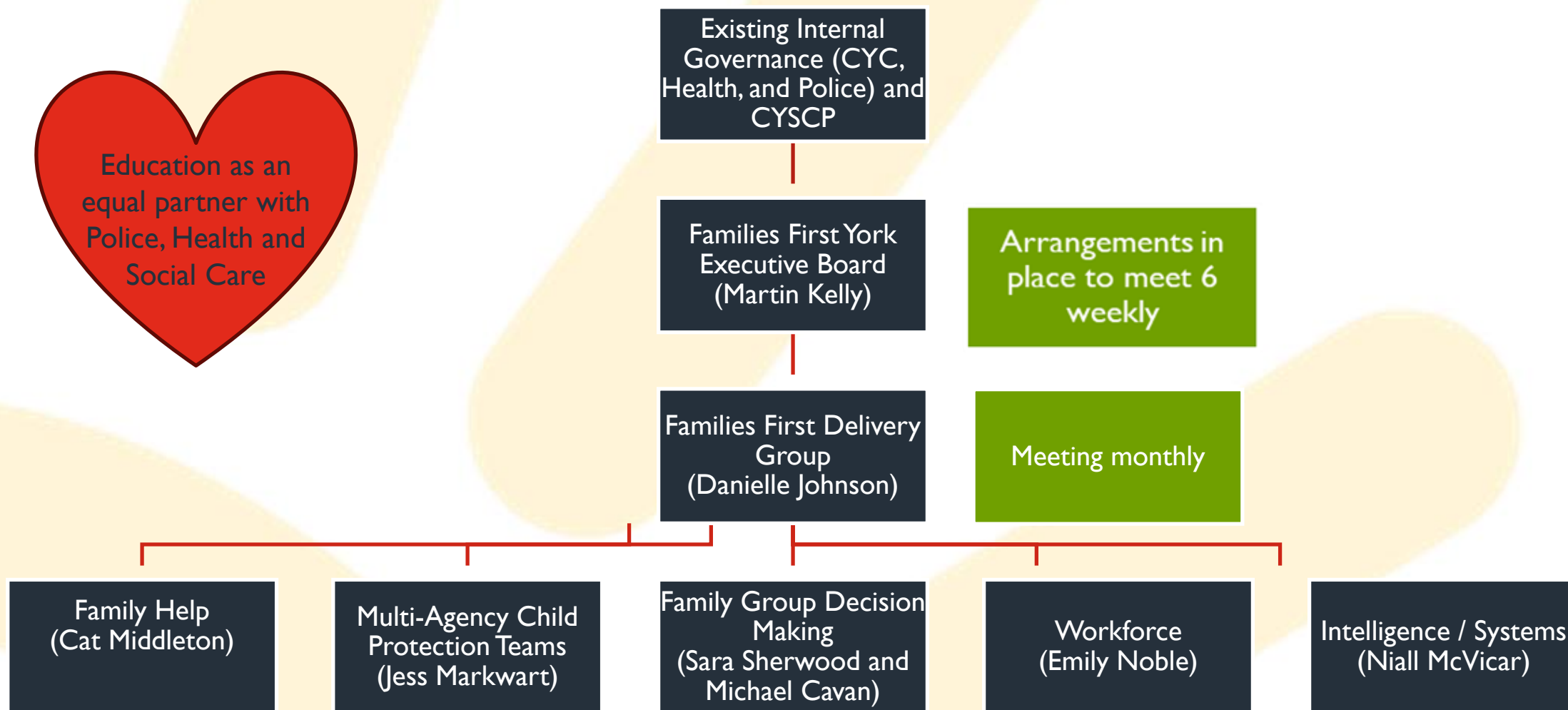
# Family Group Decision Making



Offer FGDM through family help, multi-agency child protection and care and consider offering FGDM at every decision point, including at the point of reunification.

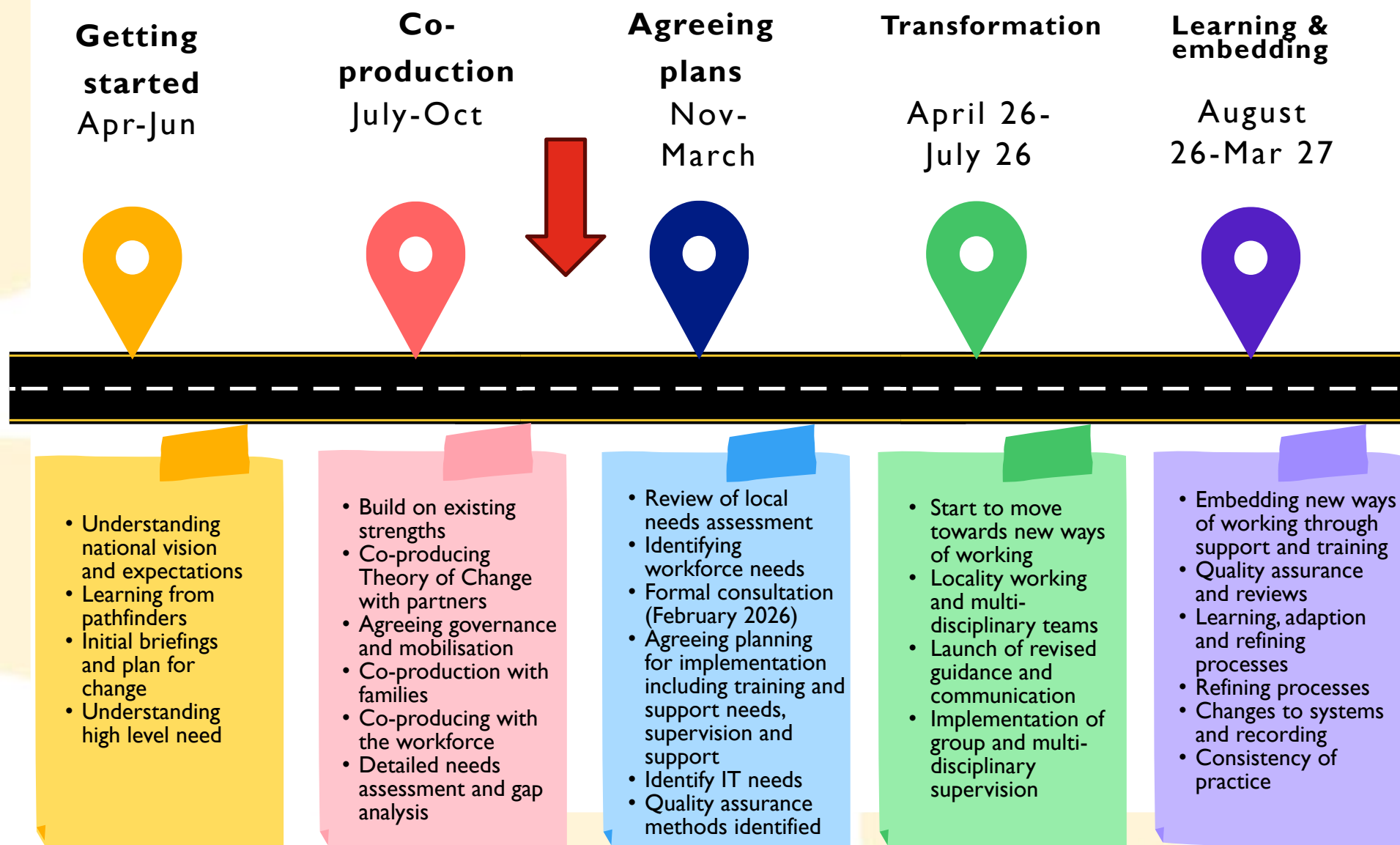
Parents and those with parental responsibility should be offered FGDM before an application is made to court for a care or supervision order

# Governance



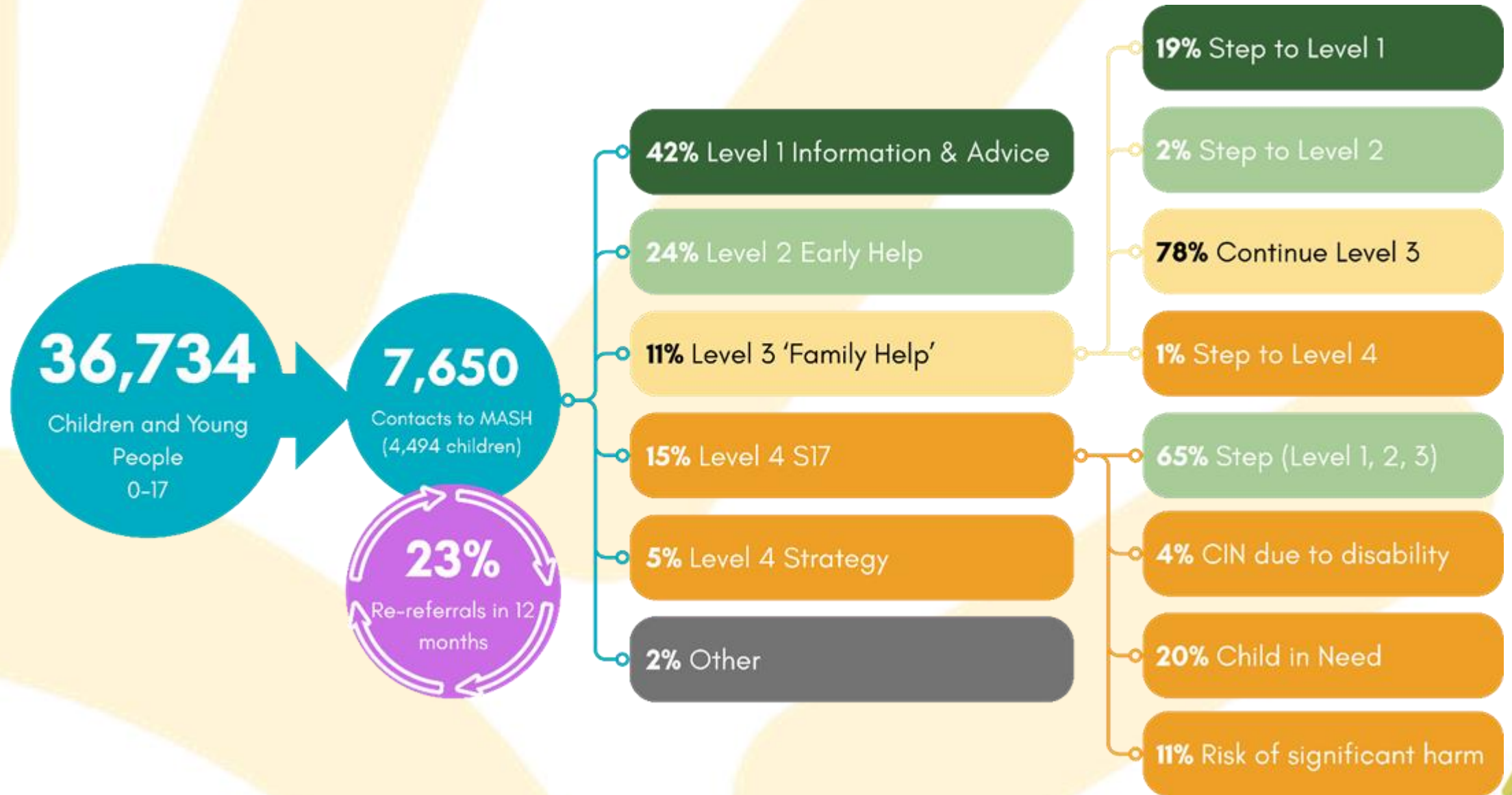
[Any queries please contact families.first@york.gov.uk](mailto:families.first@york.gov.uk)

# Our Partnership Journey



Continued co-production and learning from feedback

# York's needs assessment





# York's needs assessment

There is a rising level need in relation to Special Education Needs and Disabilities with 24.4% of needs relating to social, emotional and mental health.

Analysis across Early Help, Child in Need (CIN), and Child Protection (CP) systems reveals four highly prevalent and interconnected themes highlighted on the left

Mental Health  
(Child & Parental)

Child Behaviour &  
Parenting

Abuse, Neglect and  
Emotional Harm

Domestic Violence,  
Abuse & Family  
Relationships

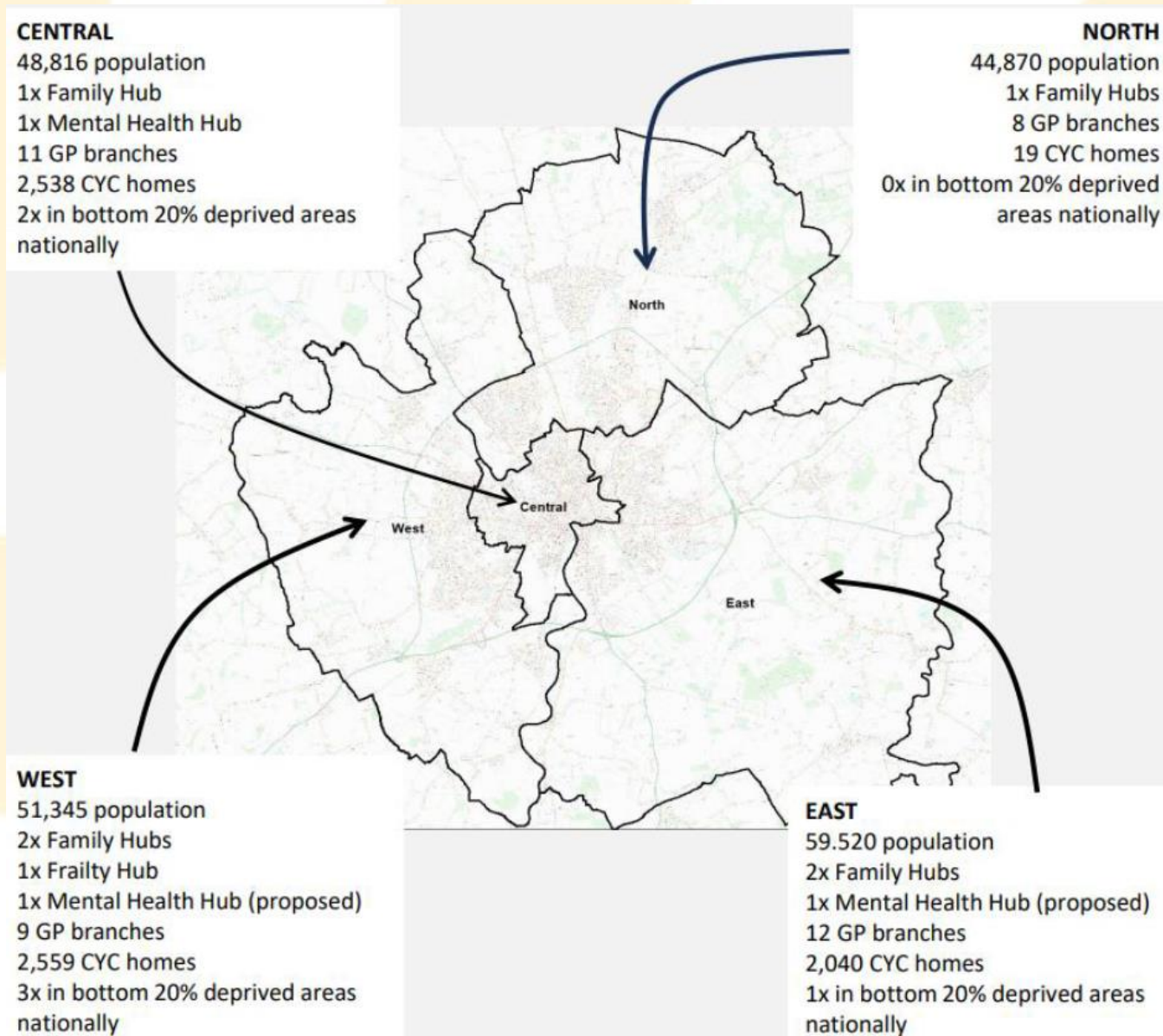
School attendance

Substance Use (Parental  
Alcohol/Drug Misuse)

Financial Stability &  
Worklessness

While the top four are the most prevalent need, the right shows areas require attention due to their high prevalence and connection to priority themes.

# York's developing locality model



The council and partners are moving towards a model of locality working across York to four common areas. The agreed four locality areas are shown below. The York Place **Integrated Neighbourhood Teams** provided preliminary health data.

To respond to local need, co-production has been at the heart local Family Hub and Special Education Needs and Disability Hub developments. There are seven Family Hubs across York. The Family Information Service (FIS) is a free, impartial, and universal service for all families living in York accessed via the [Raise York network](#).



# The Supporting Families *Offer to partners*

- We try to ensure that practitioners across the city feel supported in the work they do with and for families. The Supporting Families Team offer a package of support to lead practitioners or any other individuals or services who are providing early help support to children and families.
- Supporting Families Advisors do not work directly with families but are a point of contact for professionals who are working with children, young people and families at an early help level.
- Advisors can offer support over the phone, via email and we are always keen to visit settings and speak directly to your teams and/or deliver any specific training or information sessions that you may feel you would benefit from.
- We are also keen to work alongside partners on refreshing the citywide Early Help Training Offer.

# Supporting Families Offer

- Support for all early help partners in terms of practice and process, use of assessment tools and the availability of services.
- Advising early help partners who else may be involved with the family to allow the development of an effective Team Around the Child & Family.
- Providing case specific advice and guidance to help you better support the families you are working with. This includes providing advice in cases where progress has become “stuck.”
- Where an early help assessment (EHA) and/or Team Around the Child & Family (TACF) is in place for a family, the family will be eligible to access support from our *Family Community Work Coach* if they need support around finding employment & training or benefit advice.
- Attendance at team or training meetings to provide advice and support about early help practices.
- A key partner in the ongoing development of *The Team Around the School* initiative

# Practical resources

- **The Early Help Resource Pack** contains advice about early help processes and offers a range of tools and information about early help including: Current assessment tools and associated guidance; process maps; information sharing guidance; Levels of Need; MASH processes; Targeted Intervention Service and our most *Frequently Asked Questions*.

Access the pack here: <https://saferchildrenyork.org.uk/EarlyHelpSupport>

- **The Children's Workforce Induction Pack** is designed to provide an initial overview of key useful information and comprises 13 “bitesize” modules which practitioners can access at any time. Each module provides information around the relevant subject area but also includes links to further sources of information and, where appropriate, training opportunities.

Access the pack here <https://www.raiseyork.co.uk/InductionPack>

# Practical resources

- **2 types of posters for partners (please email us for copies)**

1. Details of some of the most used services or most relevant sources of information relating to early help in the City including the organisation's contact details

2. A breakdown of the role played by The Multi-agency Safeguarding Hub, The Family Information Service and The Supporting Families Team including their contact details.

- **Early Help Padlet** - The Family Early Help Padlet provides information and resources for practitioners in York who are directly supporting children, young people and families including early help processes & tools, support services for children, young people and families.

[www.padlet.com/supportingfamilies/earlyhelp](http://www.padlet.com/supportingfamilies/earlyhelp)

- **Early Help For Families Leaflets** – A plain language leaflet explaining to families what early help is, when it might be needed and how they can access it. **(please email us for copies)**

# Where to go for more information

- **Families First Partnership Guidance**  
<https://www.gov.uk/government/publications/families-first-partnership-programme>
- **Evaluation Report:** <https://www.gov.uk/government/publications/families-first-for-children-pathfinder-programme-evaluation-report>
- **Josh Macalister overview**  
MP overview of [Families First](#)
- **Knowledge Hub**  
<https://khub.net/group/families-first-partnership/group-home>
- **RAISE – Your Family Hub Network and Family Information Service**  
<https://www.raiseyork.co.uk/> Family Information Services tel: 01904 554444 & email [fis@york.gov.uk](mailto:fis@york.gov.uk)
- **York Special Education Needs Local Offer** <https://www.yorksend.org/parents/send-central>

Any queries please contact [families.first@york.gov.uk](mailto:families.first@york.gov.uk)

# Questions and Answers

- How as a partnership do we support families to get the right help at the right time?
- How as a partnership do we signpost families and get them to access RAISE and Family Information Services?
- How do we promote 'Families First culture' through friends and family networking
- What additional support is required to support early help?

Thank you

# York Youth Partnership Update

Sue Shooter, York Youth Partnership



York CVS is a Registered Charity (no. 225087) Company Limited by Guarantee, Registered in England (no. 493550)





# **VCSE Representation:**

## **York Health and Care Collaborative**

Peter Otter, Deputy Chief Executive, York CVS



York CVS is a Registered Charity (no. 225087) Company Limited by Guarantee, Registered in England (no. 493550)



# SEND Central Hub

Peter Otter, Deputy Chief Executive, York CVS



York CVS is a Registered Charity (no. 225087) Company Limited by Guarantee, Registered in England (no. 493550)



- First phase is up and running and happy to provide more info as needed
- From Easter 2026 likely to have more space to expand the delivery model in SEND CENTRAL
- External providers from the VCSE sector who are interested in hiring a space to be part of the delivery model can complete an expressions of interests form (will circulate after the session)
- Also host 1 hour information sessions weekly that do not need to go through this process. Anyone who offers a service to families with SEND and would like to offer an information session they can email Claire on:  
[Claire.Kenny@york.gov.uk](mailto:Claire.Kenny@york.gov.uk)



yorkcvs

# **VCSE Collaborative Communications**

## **Update: Resources and training available to the VCSE sector**

Anna Boad, VCSE Collaborative Comms Lead



Humber and North Yorkshire Health and Care Partnership

# **Children and Young People's Trauma Informed Care Programme Third Annual Conference**

Wednesday 25 March 2026, MKM Stadium, Hull

As the movement for Trauma Informed Practice across the system builds within frontline services across Humber and North Yorkshire, this conference presents an opportunity to share and consolidate learning and good practice across diverse sectors within our ICS as well as with our colleagues regionally and nationally.

Email: [hnf-tr.hnymhpmo@nhs.net](mailto:hnf-tr.hnymhpmo@nhs.net)



# HNY Children and Young People's Trauma Informed Care Programme - Annual Report 2024-2025

[Download Report](#)

The Programme is a true collaboration of partners from across our six places within Humber and North Yorkshire and this is reflected in the report. All services have come together with a willingness to share and learn from each other and to ensure positive outcomes for Children and Young People.

This report shares the progress made by the Programme in its third full year of delivery, and provides strong foundations on which to build as the Programme progresses in its delivery of the partnership strategy.

For more information please contact: [hnf-tr.hnymhpmo@nhs.net](mailto:hnf-tr.hnymhpmo@nhs.net)

yorkcvs

# Martha's Rule

[Download Engagement Flyer](#)

Martha's Rule offers families with a clear and structured way to escalate concerns if they feel their child's condition is worsening and those concerns are not being fully addressed. The aim is to ensure families feel supported and confident when raising concerns, promoting safer and more responsive care.

Hannah and her team are keen to connect with children, young people, and their families across the Yorkshire and Humber region. Their goal is to raise awareness, encourage participation, and gather valuable feedback so the implementation of Martha's Rule reflects the diverse experiences and needs of all communities.

Hannah would be delighted to discuss this further with any groups that are interested in supporting the work.

**Hannah Stacey** - Regional Martha's Rule Engagement Lead  
Yorkshire and Humber Paediatric Critical Care Operational Delivery Network  
Email: [Hannah.stacey@nhs.net](mailto:Hannah.stacey@nhs.net)

yorkcvs



# Thank you

- **Next VCSE Assembly Meeting:**  
<sup>28</sup>January, 10am – 12pm, Main Hall

